



House

Danehurst Cottage

Parkhill Road

Belsize Park

London

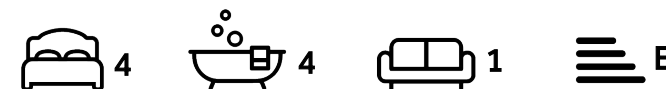
NW3 2YJ

£1,595 Per week

Council Tax Band: G

FEATURES

- Chapel Conversion
- Open Plan Kitchen/Family Room
- Roof Terrace
- Studio/Study
- 4 Bedrooms
- 4 Bathrooms
- Patio Garden



ADN
RESIDENTIAL



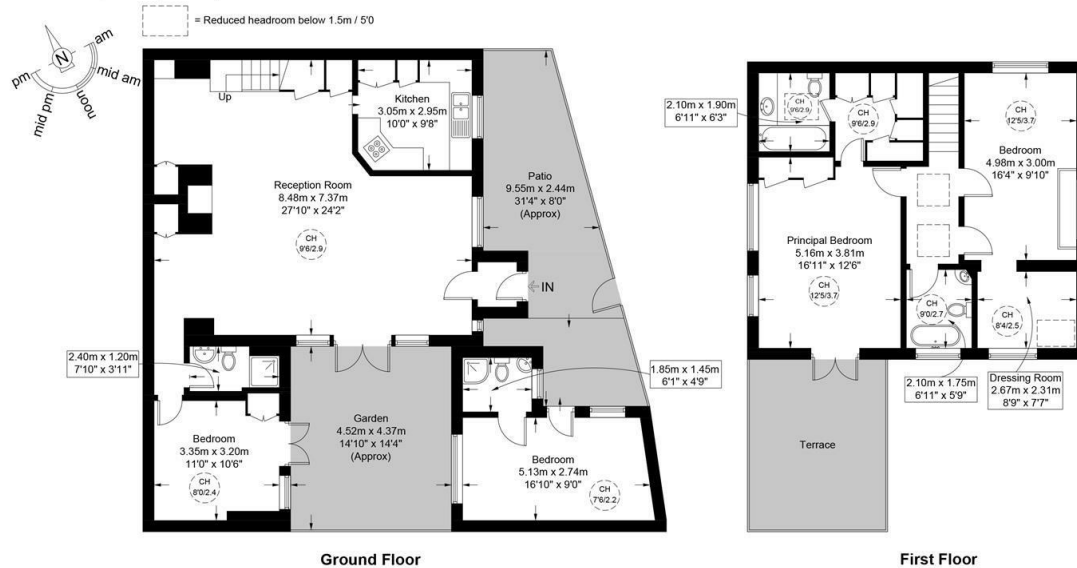
4 Bedroom House located in London

A unique and truly stunning four bedroom chapel conversion dating back to 1884 offering well proportioned rooms over just two floors. As you enter this superb property you are welcomed by a spacious open plan kitchen/family room with direct access onto a private patio garden and two bedrooms. The first floor is where you will find the principal bedroom with vaulted ceilings, dressing area, en-suite bathroom and private roof terrace and the second/third bedrooms. Additional benefits include a separate study/studio with en-suite shower room, an abundance of period features and a family shower room. Parkhill Road is ideally positioned 0.3m from Belsize Park underground station and the local amenities that England's Lane and Haverstock Hill has to offer.



Parkhill Road, NW3 **Approximate Gross Internal Area = 1754 sq ft / 162.9 sq m**

Restricted Height = 9 sq ft / 0.8 sq m



Energy Efficiency Rating		
	Current	Potential
Very energy efficient - lower running costs		
(92 plus) A		
(81-91) B		
(69-80) C		
(55-68) D		
(39-54) E		
(21-38) F		
(1-20) G		
Not energy efficient - higher running costs		
England & Wales		
	EU Directive 2002/91/EC	

Call us on

020 7407 5155

info@adnresidential.co.uk

www.adnresidential.co.uk



This plan is for layout guidance only and is not drawn to scale unless stated. All dimensions, including windows, doors, and the Total Gross Internal Area (GIA), are approximate. For precise measurements, please consult a qualified architect or surveyor before making any decisions based on this plan.



Agents Note: Whilst every care has been taken to prepare these particulars, they are for guidance purposes only. All measurements are approximate and are for general guidance purposes only and whilst every care has been taken to ensure their accuracy, they should not be relied upon and potential buyers are advised to recheck the measurements.

